



Service  
Volontaire  
International  
[www.servicevolontaire.org](http://www.servicevolontaire.org)

# INTERNATIONAL PROGRAM 2023 BELGIUM WALLONIE



# **INTERNATIONAL PROGRAM 2023**





## ABOUT THE SVI





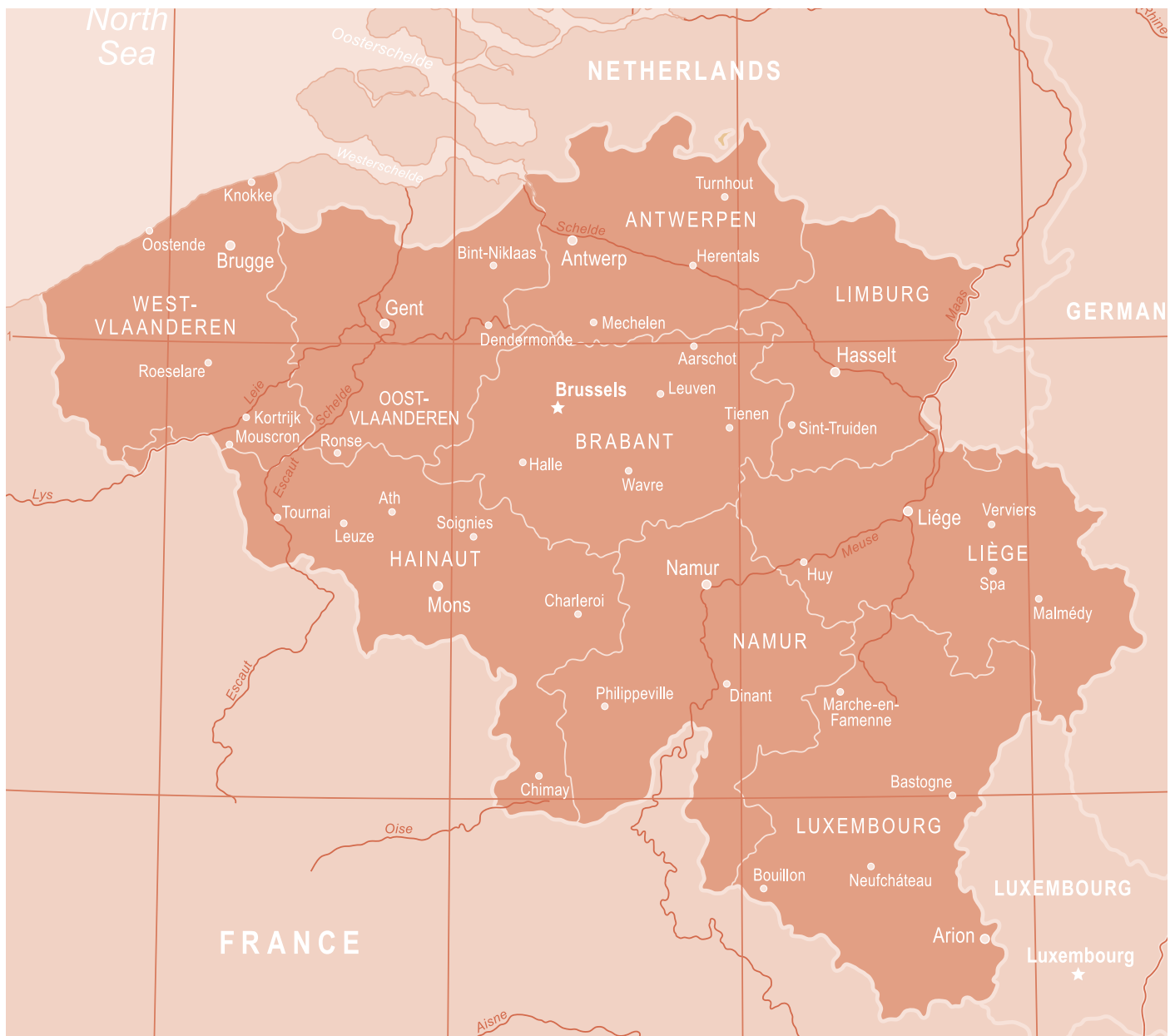


## ABOUT THE SVI

The “Service Volontaire International” (SVI) is a Franco-Belgo-Vietnamese non-profit, non-religious, non-political association created by and for volunteers. The SVI is officially recognised as a youth organisation by the Belgian Ministry of Youth and accredited by the European Commission to send and coordinate Erasmus+ and European Voluntary Service (EVS) programs. The SVI takes part in

international exchange programs in more than 80 countries, including Belgium.

Our main focus is to prepare, send out, and welcome volunteers who wish to take part in international projects / workcamps organised by other local, nonprofit associations.



## Background

The SVI was founded in 2009 by former volunteers and aid workers. The SVI is the Belgian independent branch of the Vietnamese NGO SJ Vietnam which was created in 2004 in Hanoi thanks to the commitment of both United Nations Volunteers and the Belgian Development Cooperation in which Pierre De Hanscutter, co-founder of SJ Vietnam and founder of the SVI, was working. In 2013, the French branch of our organisation was created by former volunteers. Its offices are located in Lille and since the beginning of 2017 one employee works there full-time.

## Our main activities

The SVI is actively involved in international exchanges with both the North and South. Its main aim is to prepare, send and welcome young volunteers in the context of international projects implemented by local and non-profit associations.

## Our public

We are a youth organization. Our main target group is therefore between 18 and 35 years old. However, many of our European partners offer the possibility to go on a volunteering project from the age of 16. Our offers can be for individual projects as well as for groups (youth movements, school groups, families...).

Our will is to make volunteering accessible to all. This is why we work a lot with Erasmus+ and the European Solidarity Corps in order to reach a wider public and especially to give young people with fewer financial, social or cultural possibilities the opportunity to try this experience. In this way, we hope to make a wider contribution to "educating" responsible, critical and supportive citizens.

Almost 1,000 young Belgian people take part in a volunteering project every year, as well as about a hundred volunteers who come from all over the world to come and live the same experience in Belgium.

## Missions and values

The organisation mainly focuses on intercultural exchanges between young people (from 16 to 30 years old) across the world, trying to give them the opportunity to take part in a volunteering project, regardless of age, gender or skills. In other words, the SVI's main goal is to make international volunteering accessible to the greatest number of young people. By doing so, the SVI seeks to encourage young people to be active and proactive in the society they live in, empower them and help them to become citizens of the world who are ethically and socially aware, critical, as well as sensible. Thus it promotes not only solidarity, but also active citizenship. The SVI's ultimate goal is to make young people aware of the challenges of our globalized society and get them to understand the reasons why solidarity, diversity and development are important in such a society.

The SVI believes that the youth should be the first ones to benefit from opportunities such as international volunteering because they represent the future and will play a key part in tomorrow's society. The SVI also believes that volunteering should not be a way to make profit, but to support local associations, to strengthen one's faculty to adapt to foreign cultures, to break out of one's comfort zone and learn about others and oneself. The SVI also believes that everyone can contribute to a project, whether they are from the North or from the South and that cultural exchanges can be made from North to South and the other way around.

## What does volunteer mean for us?

First of all, voluntary work has to be distinguished from humanitarian work. Indeed, the volunteers sent to international workcamps do not need any specific skills apart from their motivation (and sometimes a basic knowledge of English, which is the main language spoken on most workcamps) whereas humanitarian actions are carried out by professionals such as doctors or teachers in a crisis situation.

Secondly, the SVI actively stands up against what is often referred to as “humanitarian tourism” or “voluntourism”. The SVI strongly believes that volunteering and tourism are two completely different things. Voluntourism is a form of alternative tourism and refers to a combination of tourism and volunteering whereby people go to developing countries on holiday while also volunteering for a charitable cause during their stay, usually for a large sum of money (the prices can vary from € 700 to over € 2,000 and do not include transportation). The SVI is deeply convinced that this is morally unacceptable, as the host organisations on the spot do not receive any financial support. Furthermore, the companies belonging to this sector pretend to function like associations by using similar communication strategies. They organize voluntary projects according to their clients' demand without taking into account the needs of local populations. Thirdly, as far as the SVI is concerned, volunteering is not about saving the Third World or bringing culture to poor countries. It is not a trip either; it is simply about bringing a financial and human support to a local organisation and community.

Volunteering does not mean adding a new line to one's CV, although it can be a real plus for one's future professional life. It is a personal commitment. It means having to learn and adapt to another culture, language and country, but also to other people and other customs and that will eventually lead to the development of critical thinking and open-mindedness. It also means getting involved

in something, sharing one's knowledge, skills and experience, being responsible, organised and learning to trust and respect others. International volunteering also leads people to ask themselves what they could learn from other people, cultures or countries and that gives way to a better mutual understanding and learning. Thus, through volunteering, one can become a brand-new person who can understand oneself and the world we live in better. In a nutshell, volunteering is not only about a “project”, it is also learning to live together with people who have different habits and way of living.

## Team organization

Since the creation of the SVI and for a few years, Pierre De Hanscutter had been the only full-time member. However, in April 2015, two more people were hired to help him ensure the smooth running of the SVI. Five people are currently full-time employees at the Belgian office, including the director. Apart from those five employees, trainees and volunteers are taken on each year, thus following the SVI's way of thinking: its activities should be managed by and for young people, giving them the key to success, regardless of their backgrounds, beliefs and gender.

The SVI consists of several different departments but everybody, whether working full-time or part-time, plays a key role within the organisation and works towards achieving shared goals. The different departments are the following: coordination (outgoing volunteers and groups going to Asia, Africa, Europe, North and South America, Oceania; incoming volunteers and groups going to Belgium); communication (external and internal); human resources; administrative service; legal service; accounting; translation; partnerships (with non-profit-making and profit-making organisations); education and training sessions; IT; community outreach; funding and EU affairs.





## SERVICE VOLONTAIRE INTERNATIONAL BELGIUM

### Our team

---



**De Hanscutter Pierre**  
founder & director

[pierre@servicevolontaire.org](mailto:pierre@servicevolontaire.org)

---



**Daria Proskouryakova**  
language projects & outgoing

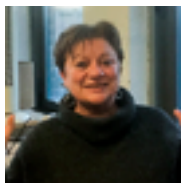
language projects:  
[language@servicevolontaire.org](mailto:language@servicevolontaire.org)

outgoing:  
[amerique@servicevolontaire.org](mailto:amerique@servicevolontaire.org)  
[asia@servicevolontaire.org](mailto:asia@servicevolontaire.org)  
[europe@servicevolontaire.org](mailto:europe@servicevolontaire.org)

---



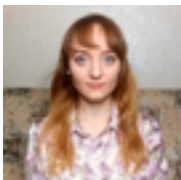
**Alena Verbitskaya**  
language projects & outgoing



**Patricia Brabant**  
pedagogic coordinator

[pedagogie@servicevolontaire.org](mailto:pedagogie@servicevolontaire.org)

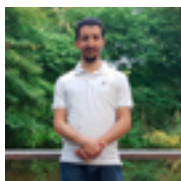
---



**Elena Churikova**  
graphic designer

[elena@servicevolontaire.org](mailto:elena@servicevolontaire.org)

---



**Ayoub Aknin**  
IT specialist

[ayoub@servicevolontaire.org](mailto:ayoub@servicevolontaire.org)

## ABOUT OUR BELGIAN PROJECTS

Volunteers who want to participate in a project in Belgium will have the choice between short-term and long-term projects.

Each of our local partners has committed to the IVS to welcome young people from all over the world to the project. We organize regular meetings with them in order to raise awareness and inform the teams hosting the volunteers about the challenges and difficulties of such a project.





# ABOUT OUR BELGIAN PROJECTS

## How to apply for a project in Belgium?

### **1- One of the volunteers would like to participate in a volunteering project proposed by the SVI: what should he / she do?**

At the SVI, we believe that volunteering should be an experience that is prepared in advance. It is therefore essential that any young person wishing to take part in such an experience should go through a sending association.

The role of the sending associations is essential in accompanying the volunteers.

The coordinators will be able to help the young person to choose the right project and will be in the front line in preparing the young person for this experience.

The SVI, on the other hand, assumes its role as a coordinating association. We are the link between the sending association, the volunteer and our local partners. We guarantee that our local partners are aware of our philosophy regarding the hosting of volunteers. We are the contact person in case of problems and ensure communication between everyone.

We always advise you to do this at least 2 months in advance to take into account all the preparations: preparation for departure in the sending association but also administrative formalities before arriving (insurance, passport, Visa, etc). The SVI is of course supported for Visa applications and we provide the invitation letters if necessary.

Each volunteer who wishes to apply must therefore go through his or her sending association. Our coordinator of the projects in Belgium will then send an application form that he or she can complete.

### **2- What skills will he/she need to show in order to access**

Volunteering is participating in a project for which only the motivation counts. We are not involved in humanitarian projects that require specific knowledge, but in a voluntary participation with the aim of contributing to a project and wanting to meet other cultures.

This is why, in the application form we ask the volunteer to clearly fill in his or her motivations.

### **3- How long will he/she have to wait after he / she send the application?**

Our policy is to ask our partners to reply within 10 days of our sending. If the partner does not reply, we invite the volunteer to choose another project. For our part, we regularly make our partners aware of the need to respond quickly in order to take into account the needs and expectations of young people.

### **4- What are the steps after sending this form?**

When our partner's response is positive, we invite the volunteer and the partner to participate in a Skype in the presence of the incoming coordinator.

This Skype aims to clarify the project, explain the expectations of each and see if it can be suitable for everyone.

The final decision will not be taken during this Skype but will be communicated a few days later by both the partner and the volunteer.

If both parties confirm the project then we can start the confirmation procedures.

You should never book a plane ticket before the confirmation has been given after the Skype.



## 5- The project is confirmed: what now?

Once confirmed, the SVI will send a series of documents to be completed by both the volunteer and the host association.

The volunteer might be asked to provide the SVI with these documents:

- Proof of flight tickets.
- A copy of his/her passport, visa.
- Proof of insurance.
- A certificate of good conduct.
- A certificate of good health.

**All these documents must be sent before arrival on the project.**

### Our short-term projects

In Belgium, volunteers have the opportunity to take part in various well-known festivals: music festivals, street arts festivals and fantasy film festivals. For these work-camps, we are looking for 5 to 10 volunteers, depending on the demand of our partners. These volunteers will be involved in the implementation of the festival (assembly and dismantling, management of waste on the festival, distribution of tickets.... In exchange for this, they will be able to participate in the festival.

This is not a free way to participate in a festival but a desire to invest in a concrete project. The volunteer should therefore expect to be actively involved in the tasks that will be entrusted to him / her.

At SVI we are very attentive to all forms of diversity: both in terms of gender equality and culture. We are convinced that this kind of project facilitates intercultural exchange and we therefore insist that all the volunteers present on the same project should be of as many nationalities as possible.

Each group of volunteers will be welcomed at a meeting point previously fixed by the project coordinator or by a team-leader.

This team-leader is present during the Skype organized beforehand and a whole series of communication

means are implemented before the project so that the volunteers can already communicate with each other and with the team-leader (social networks, WhatsApp...).

The team-leader will be present throughout the project and will be a volunteer among others but will also be the guarantor of the good understanding in the group, of the presentation of the activities to be done...

He/she will be the link between the group and the incoming coordinator in order to relay any difficulty as quickly as possible.

### Our long-term projects

Each volunteer will be welcomed on arrival by a SVI member who will be able to take him / her to his / her volunteering project, or by a member of the local association. In the next days, the volunteer will have an interview with the incoming project coordinator if he or she cannot be present on arrival.

Our partners always make sure to welcome the volunteers as well as possible in order to put them in the best conditions to start their project.

For each volunteer staying more than a month in Belgium, it is requested to participate in one of our preparation weekends.

This is an excellent way to meet the SVI team but also young Belgian people who are embark-ing on the adventure of volunteering.

We also regularly invite our volunteers from other countries to take part in the life of the SVI association: our dinners, our evenings with young people, our events organized by the SVI volunteers, etc.

Volunteers are an integral part of our association and as such are invited to all our activities.

Regular evaluations will be carried out informally but also more formally with the incoming project coordinator and the local partner. These evaluations will be forwarded to the sending associations.

## Important things to know

### 1- Visa

European citizens only need a national identity card or a passport.

Non-European citizen may need a visa. The visa must be requested at the embassy or Belgian consulate of the country where you live.

If there is no embassy or Belgian consulate in the country where you live, you should contact the Belgian Embassy, which is responsible for your country. This one is usually located in a neighboring country.

The procedure for visa application can sometimes take a long time.

Therefore, you must apply for a visa at least four weeks before departure.

([http://diplomatie.belgium.be/fr/Services/venir\\_en\\_belgique/visa\\_pour\\_la\\_belgique](http://diplomatie.belgium.be/fr/Services/venir_en_belgique/visa_pour_la_belgique))

If you need an invitation letter, you can contact us at [incoming@servicevolontaire.org](mailto:incoming@servicevolontaire.org)

In order to send you a letter of invitation, we need the following information:

- Last name.
- First name.
- Date and place of birth.
- Address.
- Passport number with date of issue and expiration.
- Nationality.
- Start and end dates of the project.

Volunteers can get extra info at <http://www.diplomatie.be/en/travel/visa/default.asp>

### 2- Health

You need a health insurance to cover your entire trip to Belgium (however usually the host has an insurance to cover your working time). Your sending association may help you find a suitable one. No vaccine is required but if you are going to do some physical work, we recommend that you take the vaccines against lockjaw and hepatitis. Make sure that you have seen a dentist before leaving home.

You must bring all the medicines you need. It might be complicated to buy them in Belgium if you do not have the necessary documents to get it. Furthermore, the medicine you need might have a different name from the one it has in your country.

European volunteers need their European Health Insurance Card up to date. You can get it for free!

### 3- How to prepare your luggage

It is crucial that you bring all your stuff in a backpack and not in any other type of suitcase, which might become very uncomfortable to move after a long journey.

Due to its location, Belgium has a typical temperate oceanic climate, which means of course Belgium has the reputation to be a rainy country. Well, let's moderate this a little bit! Generally speaking, there are no significant temperature differences between the South and the North. That being said, the southern part might be a bit colder during the winter (anyway don't forget your mittens for the whole country) while the northern part (by the coast) might be a bit hotter during the summer. During the summer, it's even possible to go for a dip in the North Sea so do not forget to bring your swimming suit.



You would better not forget some useful things when you are thinking about traveling to Belgium:

- Sleeping bag, sheet and pillow, mat (if specified in the info sheet of your project), towels.
- A TENT (if specified in the info sheet of your project).
- Sun cream, a hat.
- Clothes and shoes adapted to various weather (even in summer!) and outdoor activities.
- Your mobile phone (if you stay here for a long time it is convenient to buy a Belgian Sim-card).
- Some things about your country (posters, music, postcards, map, video, food) and your family.
- Pocket money.
- Personal pharmacy.
- If possible, bring only ONE bag to have more space in your dormitory. Backpacks are the best!

**To get cheap flight ticket, we have selected a list of cheap airlines companies. You can get this list at <https://travel.servicevolontaire.org>**

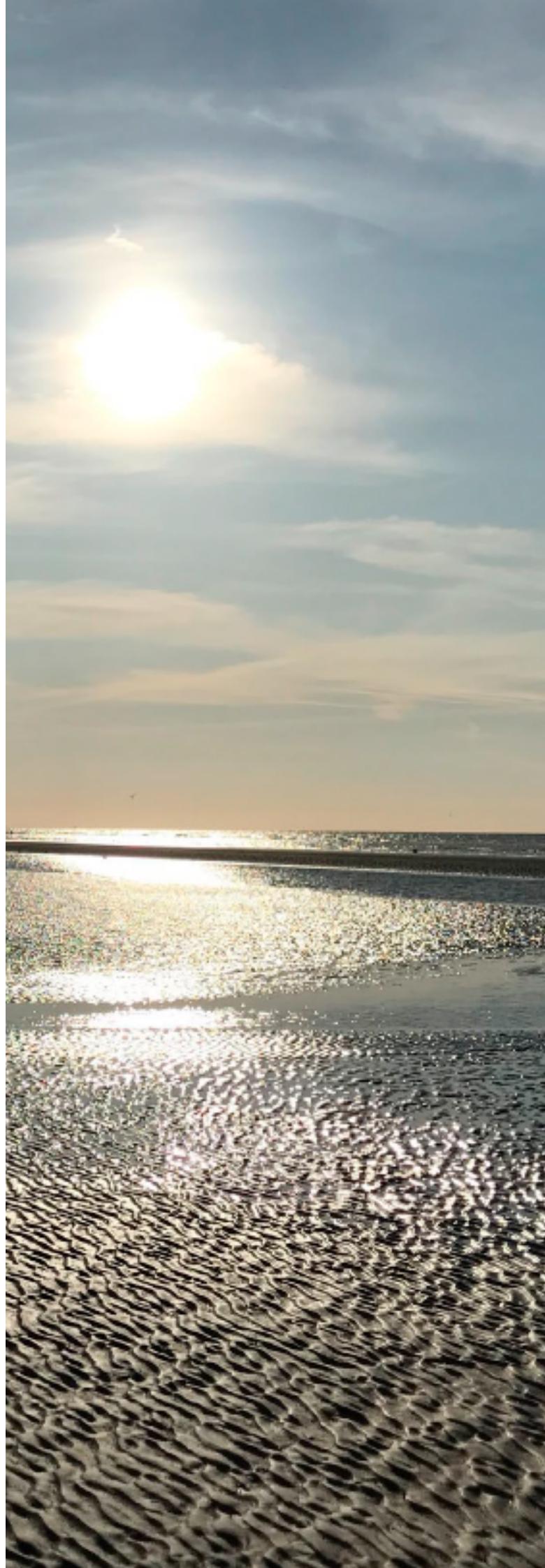
#### **4- Emergency phone numbers**

If you encounter any trouble related to your volunteering project, call the SVI:

- +32 2 888 6713      Office  
from Monday to Friday  
between 9am and 18pm
- +32 495 680 934      Director  
**De Hanscutter Pierre**

#### **5- Covid**

You can find all important information about the situation in Belgium via this link: [info-coronavirus.be](https://info-coronavirus.be)



## ABOUT BELGIUM





## ABOUT BELGIUM

It may be a small country in size but Belgium plays an important role on the international scene and consistently ranks among the top places to live in the world. Belgium's multicultural makeup gives its capital Brussels an edgy vibe with an array of global services and facilities on offer to ease in even the newest expat.

On the surface, Belgium offers many top attractions in spades. It's the home of the European Union (EU), a short trip to a number of international capitals, and has three official languages (French, Dutch and German) and a sizeable international community. Beyond that, it's also famous for fries, Tintin, chocolate, and beer. For expats who are ready to embrace Belgian culture, moving to Belgium offers many new experiences.

### Belgium is one of the best places to live

Belgium is for you. If you prefer the beach and cycling, you won't be able to resist the call of the coast!

Our prestigious cities of art will dazzle you, whether or not you are a lover of history, architecture, culture... Belgians are gastronomes. They love good food and will share with you their specialities of beer, cheese, chocolate, pralines, chicons, Flemish carbonades, speculoos... And French fries are an institution.

And above all, Belgium is a place of fun: the cultural life is intense (exhibitions, concerts, festivals, theatre, dance...) and the night is festive.

### Cost of living

There is an excellent standard of healthcare in Belgium. High quality medical care is widely available, enhanced by large university hospitals. It's also considered cheaper than the US, and shorter waiting times means Belgium is becoming a hotspot for medical tourism from surrounding countries.

It's also relatively affordable to live. Brussels, where many expats choose to base themselves, is cheaper than other western European capitals,

such as London, Copenhagen, Vienna, and Zurich, according to Mercer's Cost of Living rankings.

The cost of living in Brussels is **24% cheaper** than in Paris.

The cost of living in Brussels is **46% more expensive** than in Prague.

The cost of living in Brussels is **21% cheaper** than in Amsterdam.

The cost of living in Brussels is **148% more expensive** than in Buenos Aires.

The cost of living in Brussels is **26% cheaper** than in Washington.

The cost of living in Brussels is **78% more expensive** than in Mexico City.

The cost of living in Brussels is **33% cheaper** than in Sydney.

The cost of living in Brussels is **12% more expensive** than in Charlottesville, Virginia.

The cost of living in Brussels is **5% more expensive** than in Madrid.

On top of that, the country boasts a good public transport system with a smooth-running integrated network of buses, metros and trams, making it easy to go on weekend getaways around Belgium (with some weekend destinations even 50 percent discounted) or even pop into a neighbouring country.

### Cost of public transport in Belgium

Most Belgian cities are well connected by public transport. In major cities, a transport pass for the month costs around €35–€50. These passes can be used on every mode of public transportation. A single fare usually costs around €2–€4.

Taxi rates start off at around €4 in Brussels. In general, to buy a 1 km taxi ride in Belgium it costs 2 €. As this is an average, it can go as low as 1.66 € and as high as 2.78 € depending on the time of year. This price for one km in TAXI is higher than the cost in France (by 15%). In other major cities, the starting rate varies but the rate per kilometre is generally in the same range.

The journey between Zaventem airport and the centre of Brussels costs around 45 euros. However, we encourage you to take the train and public transport.

## Cost of dining out in Belgium

Belgium, and its capital city of Brussels in particular, is known for its culinary prowess. Brussels has been compared to such cities as New York, Hong Kong and Paris because of the sheer quality and variety of dining experiences it has to offer. The prices, however, are also up there for fine dining. But you can easily find cheaper options, so those who love to eat out will not have to limit themselves. Inexpensive meals for one person range from €10–€15, with a half-litre of commercial beer costing around €4. As a comparison, a McDonald's value meal is around €8 and a cappuccino around €2.70.

## Emergency

Make note of these important emergency numbers before you land in an emergency in Belgium, plus a number of Belgian helplines for support and information.

If you're living in Belgium, it's important to make note of Belgium's emergency numbers before it's too late. Belgium has a range of important emergency numbers and useful helplines, depending on the accident or crisis. Here is a list of the most important Belgian emergency numbers to write down.

Emergency phrases and medical terms in French and Dutch:

- Accident: Accident / Ongeluk.
- Emergency: Urgence / Spoedgeval.
- Ambulance: Ambulance / Ziekenwagen.
- Doctor: Médecin / Doctor.
- Police: Police / Politie.
- Extremely ill: Très malade / Heel ziek.
- I need an ambulance: J'ai besoin d'une ambulance / Ik heb een ziekenwagen nodig.
- I need a doctor: Il me faut un médecin / Ik heb een doctor nodig.
- I need the police: J'ai besoin de la police / Ik heb de politie nodig.

## Emergency phone number

### Call: 112

This emergency number can be called anywhere in the European Union (EU) for free, plus certain other countries such as Israel, Norway and Russia. You should only call in emergency situations. You can also call 112 for serious accidents, if someone needs to be pulled from a vehicle, if a dangerous big animal escapes, such as a horse or snake, or to clear a road after a storm. The unique benefit of the 112 number is that it can be called from any telephone, including mobiles without a SIM.

The operators in Belgium will typically speak English, French, Dutch and sometimes German, and you will need to supply the exact location, address and details on the accident and wounded people; don't hang up until you've been helped.

Numbers beginning with 0800 are also free.

## Lost and stolen Belgian IDs, passports and residence permits

Block your documents by calling the government service **DocStop** | Call 00800 2123 2123 | 24/7



**SUMMARY OF THE INTERNATIONAL  
PROJECTS IN BELGIUM 2023**

Code	Name	Place	Dates	Type	N° Vols	Age limit	Remarks
SVI_BIFF2023	<b>Brussels International Fantastic Films Festival</b>	Brussels	11-04-2023 23-04-2023	EDU – FEST CULT – ART	10	18+	Motivation Letter. Project with teamleader
SVI-CouleurCafé2023	<b>Couleur Café</b>	Brussels	17-06-2023 - 30-06-2023	SOCI – MANU – FEST – CULT	10	18+	Motivation Letter. Project with teamleader
ESPERANZAH_SVI2023	<b>Esperanzah Festival</b>	Floreffe	26-07-2023 - 31-07-2023	ENVI – FEST	5	18+	Motivation Letter. Project with teamleader
SVI_DOUR2023	<b>Dour Festival</b>	Dour	11-07-2023 17-07-2023	ENVI – FEST	10	18+	Motivation Letter. Project with teamleader
22-25	<b>Côte à Côte</b>	Louvain-La-Neuve	Permanent project	EDU – FEST CULT – ART	1	18+	Motivation Letter
SVI-AJJB25	<b>Auberge de jeunesse Jacques Brel</b>	Brussels	Permanent project	ENV – CULT LEAD	2	18+	Motivation Letter
BE-SVI-fagotin	<b>Le Fagotin</b>	Stoumont	Permanent project	ENVI – EDU ANI	2	18+	Motivation Letter
SVI_REN_2022	<b>Renaissance</b>	Braine L'Alleud	Permanent project	SOCI – DISA EDU	2	18+	Motivation Letter
SVI-LCDC	<b>Compagnons de Chevlipont ASBL</b>	Bruxelles-Forest	Permanent project	EDU – SOCI MANU	2	20+	Motivation Letter
SVI-BAUTO-EXT	<b>Auberge de jeunesse de Bouillon</b>	Bouillon (Province du Luxembourg)	Permanent project. From March to September	EDU – SOCI MANU	2	20+	Motivation Letter
MalmedyAUTO-EXT	<b>Auberge de jeunesse Malmedy</b>	Malmedy (Province de Liège)	Semi/ Permanent project	EDU – SOCI MANU	1	18+	Motivation Letter
SVI-BAUTO-EXT	<b>Auberge de jeunesse Champlon</b>	Champlon (Province de Luxembourg)	Semi/ Permanent project	EDU – SOCI MANU	2	18+	Motivation Letter
SVI-LLNAUTO-EXT	<b>asbl Mozaïque Social tourism accommodation</b>	Louvain-La-Neuve (Province Brabant Wallon)	Permanent project (1 month or more)	LEAD – SOCI KIDS – CULT	1	18+	Motivation Letter
SVI_KALEO_2023	<b>Kaleo</b>	Ardennes	Permanent project	EDU – SOCI CULT	2	18+	Motivation Letter

# BRUSSELS INTERNATIONAL FANTASTIC FILMS FESTIVAL

Code	SVI_BIFF2023
Name	Brussels International Fantastic Films Festival
Location	Brussels
Dates	11-04-2023 – 23-04-2023
Type	EDU – FEST – CULT – ART
Age	18+
Volunteers	10
Fees	no fee



## Presentation of the partner

The Brussels International Fantastic Film Festival is a 13-day festival. BIFFF Festival is one of the largest fantasy film festivals in the world. Come and immerse yourself in the temple of fantasy, horror, science fiction, thriller, and surrealism. A unique world, a portal to 1001 dreams in the heart of the capital of the European Union. In addition to numerous exhibitions, street theatre performances, magical creatures, and the famous Vampire Ball, more than 150 international films are previewed here.

2000 artists and professionals are invited to share their passion and experience of cinema in a fantastic atmosphere.

More than anything else, it is a unique concept. It is one of the most important genre film festivals in the world. It welcomes more than 50,000 spectators every year.

The festival consists of international film competitions, face and body painting competitions, numerous creative workshops and master classes, a special art

competition day, a zombie race, and many other crazy events!

The line-up is more international than ever; however, we dedicate a special part of our program to home-grown Belgian artists.

The festival will take place at Brussels Expo, at the Heysel.

## Volunteers profile

Volunteers are young people (18-35 years old) who have to be extremely motivated, flexible, reliable and enthusiastic. They CANNOT have any physical condition. And most important, they must love cinema and particularly fantastic genre!

## Volunteer work

Volunteers will be part of the local team composed of more than 100 volunteers. They will have to be ready to work at least 5 hours every day. Tasks will be clarified continuously during the festival but volunteers will mainly work with the public: ticket control, public circulation, general information...

Volunteers might also have to do some physical work before and after the festival.

Unfortunately, you won't only enjoy the festival... It will be hard work too.

The job will be more or less the same throughout the whole festival, you have to be aware that it could be repetitive. Volunteers will have to work during the whole festival, from the beginning to the end. They will have to be present 2 days BEFORE.

If you plan it in advance, you will be allowed to take 3 days break maximum. During their free time, they will be free to go to the festival and enjoy the films and events (projections start at 3:00 PM and end at 1:00 AM).

Be ready to sleep little and to go to bed late!

## Accommodation

No accommodation.



## Food

The organization will give volunteers sandwiches, drink tickets and food tickets during the festival. The equivalent of only one meal will be provided every day.

There are a lot of shops, small snacks (pizza, fries, sandwich, Chinese...) and bars in Brussels.

Here is a link that will give you an idea of the cost of living in Belgium for 2023: <https://www.expistan.com/cost-of-living/country/belgium>

## Specific information

Volunteers will have to work during the whole festival, from the beginning to the end.

It is requested to arrive two days before the project as there is a preparation and presentation meeting.

Casual clothes should be enough, but it should also be comfortable in order to be reactive and flexible during the rushes. You will be provided a BIFFF T-shirt. Brussels is a rainy town so be ready for this and don't expect the temperature to be very hot in April. You must remember that you will spend some times outside for different activities.

No specific material is required out of a sleeping bag.

After the work, you will be able to enjoy the films and events. The entry will be offered as well as your meals and your pass.

Members of SVI will be here to provide further information on the cultural sites and events in the region. There are several opportunities of sports and outdoor activities.

## Meeting Point

The meeting point and how to get there will be indicated in the infosheet.

## Camp language

Notions of French or Flemish would be great, but English is compulsory.

## Location



- **Nearest airport:** Zaventem Airport (Brussels Airport) – 14 km
- Brussels South Charleroi Airport – 60 km
- **Nearest train station:** Central Station – 200m

## About Brussels

Brussels is not only the Belgian capital but also the European capital. The city combines the characteristics of a large city with the charm of smaller, quieter towns. Modern with a classical touch, the streets of Brussels are full of charm and history. Brussels can be visited on foot, by bike, but also by horse-drawn carriage.

No, the people of Brussels do not eat Chips every day. That said, they are still proud of their chip shops, and there can be a queue of people outside the best ones at all hours. A very cosmopolitan city, Brussels offers a range of different cuisines from around the world scattered throughout the city.



# COULEUR CAFÉ

Code	SVI-CouleurCafé2023
Name	Couleur Café
Location	Brussels
Dates	17-06-2023 – 30-06-2023
Type	SOCI – MANU – FEST – CULT
Age	18+
Volunteers	10
Fees	50 euros



## Presentation of the partner

It has been a long time since Couleur Café piled up its souks, restaurants, and musicians in the covered market of Schaerbeek, in Brussels, that now became a European cultural centre. In 1990, first edition of CouleurCafé, the idea was to have a multicultural, multiraced and friendly festival. Something that would not be big and gloomy. Something like the multicoloured social fabric of Brussels. The program back then was mainly with African and Afro-Cuban music. First success with 5,300 visitors.

Couleur Café already had the perfect ingredients: souks, decoration, restaurants, craftsmen, fanfares... Even if it was way more modest of course. With the success, the festival became bigger, moved, took on new music and became interested in urban music. Couleur Café wants the program to be eclectic, welcomes discoveries and Belgian music, even if its black roots are still as important. Over the years, the festive side of the festival and the multidisciplinary dimension were strengthened, with for example the Cool Art Café exhibition (with fine art) and the increase of extra-musical activities: dance lessons, free style demonstration, NGO's invitation in the Solidarity Village...

At Tour & Taxis since 1994 and now at the Roi Beaudouin stadium, Couleur Café is not only a world music festival anymore but a festival with all urban music. With more than 50 concerts in three days, Couleur Café offers three stages with lots of different music: r&b, hip-hop, funk, afro, reggae, raga, dub, dancehall, latin, salsa, blues and rock. There are also spaces for electronic music with that same desire of melting-pot.

Although Couleur Café gathers more than 75,000 visitors, including 3,000 campers, it keeps a human face. It is managed self-sufficiently by Zig Zag, a non-profit organization. The festival became a must-see Belgian musical event that still encourages the fun and friendliness 24 years after its creation.

## Volunteer work

Before the start of the festival, volunteers must be hired to set up, barricade, cover, organise, glue, build and more to welcome and install over 250 people from the Couleur Café staff and our volunteers, the day before the official opening of the campsite.

During the festival (you can work during the morning or the afternoon): Among the many posts to be managed are the ticketing, breakfast, and rotating teams for the peace and quiet of the campsite, the cleanliness awareness team, and the technical team. But also, the distribution of documents to explain to the residents around Tour & Taxis about the event.

## Accommodation

You sleep in tents. Either you bring it or the SVI rents you one (25 euros) for the duration of the festival. We give you back 23 euros when you give us back the tent. You also need to bring your sleeping bag and mattress.

## Food

In compensation for your volunteering:

1. Drink vouchers
2. Food vouchers

Only during the festival and not during the off days.

## Meeting point

The meeting point and how to get there will be indicated in the info sheet.

## Camp language

The project allows you to speak either French or English. You will meet people from all over the world, so English will often be the language used. Don't forget: the group can be a support even in the comprehension of linguistic. We don't ask for bilingual people.

## Location



- **Nearest airport:** Zaventem Airport (Brussels South Charleroi Airport) – 60 km
- **Nearest train station:** Brussels-Midi Station – 8 km
- **Transport between the railway station and the place of volunteering:** Metro 6 (25min)

## About Brussels

Brussels is not only the Belgian capital but also the European capital. The city combines the characteristics of a large city with the charm of smaller, quieter towns. Modern with a classical touch, the streets of Brussels are full of charm and history. Brussels can be visited on foot, by bike, but also by horse-drawn carriage.

No, the people of Brussels do not eat chips every day. That said, they are still proud of their chip shops, and there can be a queue of people outside the best ones at all hours. A very cosmopolitan city, Brussels offers a range of different cuisines from around the world scattered throughout the city.



# ESPERANZAH !

Code	ESPERANZAH_SVI2023
Name	Esperanzah Festival
Location	Floreffe
Dates	26-07-2023 – 31-07-2023
Type	ENVI – FEST
Age	18+
Volunteers	5
Fees	50 euros



## Presentation of the partner

Esperanzah! is a world music festival that has offered a varied programme of well-known and lesser-known artists since 2002. Every year it is an alternative line-up, open to the world and based on discovery. A programme that expresses cultural diversity and deliberately goes against the tide of monopolies, algorithms and the mainstream. It takes place at Floreffe Abbey, located between Charleroi and Namur in Belgium.

Z ! Association, organizer of the Esperanzah music festival, aims to design and organize remarkable sites, events or cultural and social activities.

## Volunteer work

Volunteers will be responsible for cleaning the festival site. They will collect waste so visitors can attend concerts in a welcoming and safe site. They will also be assigned to physical tasks. They will have to make festival-goers aware of the protection of the environment. Volunteers will work from 9am to midday and from 1pm to 5pm. Your job is to keep the area clean and tidy. During the festival, the volunteers are free to enjoy too! The work to be done can be physical.

## Accommodation

Volunteers will be accommodated in a dormitory. Kitchen, shower and toilet will be available, but they will share it with another group of volunteers. There will be no washing machine. You will be asked to bring a mattress and a sleeping bag. Do not forget to bring working clothes as it can be rainy from time to time.

## Food

Three meals are provided each day for volunteers. Vegetarian volunteers will receive special meals. Only during the festival and not during the off days.

## Specific information

Clothing: Boots or hiking shoes (you might not want to take nice shoes because you might get VERY dirty).



Do not forget, everything will take place outside. Work clothes (for the construction work), and comfortable clothes (for the festival). Summer clothes AND winter clothes because it can get warm or cold!

In Belgium we can have very rainy summers with temperatures around 15°C but we can also have periods of high heat with dry weather and temperatures around 35°C, so we have to check the weather before leaving and be ready for anything.

Volunteers need to bring clothes that dry fast because if you get wet, you might have to change clothes several times a day. If you think about bringing clothes that dry fast, you will not end up with only wet clothes left.

### Meeting point

The meeting point and how to get there will be indicated in the info sheet.

### Camp language

The project allows you to speak either French or English. You will meet people from all over the world, so English will often be the language used.

Don't forget: there will be 10 of you on the project. The group can be a support even in the comprehension of linguistic. We don't ask for bilingual people.

### Location



- **Nearest airport:** Brussels South Charleroi Airport – 29 km
- **Nearest train station:** Floreffe Station – 2 km
- **Transport between the railway station and the place of volunteering:** Bus 10 (12min)

### About Floreffe

Floreffe is a French-speaking town of Belgium located in the Walloon Region in the province of Namur.

There is a fabulous range of things to do in and around this destination. Nothing compares to watching great masterpieces when your soul needs to be transported. By looking at the fabulous works of art in the Félicien Rops museum, see if you can find a deeper meaning in them.

# DOUR FESTIVAL

Code	SVI_DOUR2023
Name	Dour Festival
Location	Dour
Dates	11-07-2023 – 17-07-2023
Type	ENVI – FEST
Age	18+
Volunteers	10
Fees	50 euros



## Presentation of the partner

The Dour Festival is a European festival of alternative, independent and multicultural music organized by Carlo Di Antonio, taking place every summer in Belgium at Dour, near Mons, for 5 days on the Dour wind farm, near the French border in the province of Hainaut. The festival is getting bigger and bigger and counts more and more festivalgoers coming from all over the world.

More than 200 artists perform on six stages. More than anything else, it is a unique concept and a wonderful atmosphere. More than 1,000 journalists came to the festival. These professionals are usually from Europe, but every year we can note the presence of journalists from Australia, Canada, and the United States. The programming is more international than ever, but we devote a large part of our programme to Belgian artists.

## Volunteer work

Volunteers will be part of the GREEN BRIGADE. Your job is to keep the area clean, tidy, and safe. The team will collect and recycle the waste to give the festival-goers a nice and safe ground. Volunteers will also have to do physical work (built the stage, carry heavy material...). Do not imagine you will simply enjoy the festival. It will be hard work too! Your job will be the same throughout the whole festival. It could be heavy and repetitive. Volunteers will have to work around 6 hours a day, probably early in the morning. During your free time, you will be free to go to the festival and enjoy the concerts (concerts start at noon and end at 5.00 am).

## Accommodation

A camping site is reserved for the volunteers. It is well located, outside the festival, in a quiet environment. There is also a bar. There are showers and toilets in the camping. You need a flashlight, toilet paper, bath towel, basic pharmacy, earplugs... You can expect not to have hot water to shower. You need to bring all the things that will be useful to your stay because you will not be able to buy anything during your stay over there! You need a tent and a sleeping bag (+ camping mattress, pillow,...) and all you think you need to go camping (there is no kitchen). You need to bring your own material to fix your tent if you need to do so! There will not be any building where you can sleep. If you do not bring your own tent and camping material, you will have to sleep in the mud!

## Food

The organization will give volunteers 1 ticket for a sandwich and 4 tickets for drinks per day.

You need to have a small budget for others meals (about 10€-15€/day). There are a lot of shops, small snacks (pizza, fries, sandwich, Chinese...) and bars in Dour. If possible, take kitchen material like a camping stove, plates, cutlery... to cook for yourself in the camping.





### Specific information

Take hiking shoes as it can be very muddy. Working clothes, warm clothes (it can be very cold sometimes and at night). You need to bring all your camping gear! (Tent, mattress, sleeping bag, etc.)

### Camp language

The project allows you to speak either French or English. You will meet people from all over the world, so English will often be the language used.

Don't forget there will be 10 of you on the project. The group can be a support even in the comprehension of linguistic. We don't ask for bilingual people.

### Location



- **Nearest airport:** Brussels South Charleroi Airport – 45 km
- Zaventem Airport (Brussels Airport) – 62 km

- **Nearest train station:** Saint-Ghislain Station – 10 km
- **Transport between the railway station and the place of volunteering:** Bus 7 (25min)

Dour Festival also organizes shuttle buses. Several bus options are available from France, Belgium, Luxembourg, Holland, Switzerland, and England.

The bus packages all include:

- Return bus journey from the city of your choice
- The presence of a coordinator during the journey
- Entertainment during the journey

You will find all the information via this link: <https://www.dourfestival.eu/fr/practical/getting-there/by-bus/>

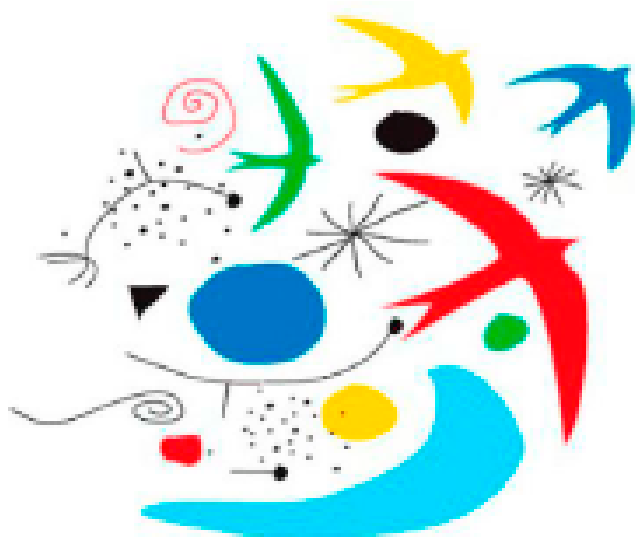
### About Dour

Dour is a very small town. You will not have to do anything else on site apart the festival. But after the site, you can go to Mons.

With a characterful medieval center climbing up a hill and a fine Grand Place, Mons located at 20km from Dour had a substantial face-lift in 2015, when it was European Capital of Culture. The legacy is a handful of entertaining modern museums, which make for an excellent visit and offer plenty to keep you busy for two or three days. One museum covers war in splendid fashion, while another celebrates the riotous Doudou festival, which stars St George, a dragon, Sainte-Waudru, devils and thousands of beery revelers.

# CÔTE À CÔTE

Code	22-25
Name	Côte-à-Côte Go asbl
Location	Louvain-La-Neuve
Dates	Permanent project
Type	SOCI – DISA – EDU
Age	18+
Volunteers	1
Fees	50 euros



Côte-à-Côte

## Presentation of the partner

The Côte-à-Côte association has built a passive home in the heart of Louvain-la-Neuve for young adults with motor disabilities such as cerebral palsy (CP). It thus offers these young people the opportunity to live their lives independently.

Côte-à-Côte Go asbl has set itself the mission of creating an environment that enables CPs to realize their life project through autonomy and solidarity in order to become actors in society. This project also allows the inhabitants and friends of Côte-à-Côte Go asbl, with or without disabilities, to enrich themselves by sharing a life experience.

### A pilot project in terms of housing:

- A passive construction, on a human scale, in the heart of the city of Louvain-la-Neuve.
- A grouped housing unit that brings together 11 young adults IMC's, an Erasmus student with reduced mobility, a student working on a disability-related issue, two carers and their families.

### A pilot project in terms of support:

- A personalized life project.
- A maximum of autonomy with a maximum of social links.

### The people | the CP

Cerebral Palsy (CP) is the result of a non-progressive, permanent brain injury that occurs in the developing brain.

It is a syndrome that combines posture and movement disorders. It is sometimes accompanied by associated disorders: epilepsy, speech, vision, etc...



## Volunteer work

The volunteer will be a part of the household and will share the values of Côte-à-Côte. He will accompany the people in their daily life, bring his own ideas and his energy in a mixed group of people. Depending on his abilities and his adaptation, the volunteer will perform the following tasks alone or with someone:

- Manage daily life in a team setting while emphasizing the autonomy ability of each resident.
- Assist residents in their autonomy and self-sufficiency project.
- Organize community activities with the residents.
- Ensure safety and well being of the residents by handling morning and evening activities. Morning: breakfast, preparation for outings, maybe escorting to the place of activity. Evening: dinner, leisure activities, getting to bed.
- As needed: ensure security and wellbeing of residents at night.

## Accommodation

Accommodation is included. You will have a room in the house if it is free. If not, you will be hosted in another house in Louvain-la-Neuve.

## Food

You will be given breakfast and dinner. Dinner is prepared by the accompanying persons.

## Meeting

All information on how to get to the project will be given in the info sheet.

## Language

I Speak French or have a good knowledge of French to make yourself understood by residents

## Location



- **Nearest airport:** Zaventem Airport (Brussels Airport) – 27 km
- Brussels South Charleroi Airport – 40 km
- **Nearest train station:** Louvain-La-Neuve Station – 2 km

As the organization is located in the same city as SVI, you will have the opportunity to meet its members as well as participate in all local SVI activities.

## About Louvain-La-Neuve

Located 30 km from Brussels in the heart of Walloon Brabant, the site of the university of Louvain-la-Neuve welcomes over 20,000 students in its eleven faculties.

Created in 1971 by the university, this city is one of the youngest in Europe. A city in the countryside, it offers an exceptional living environment to students, researchers, professors and inhabitants. Museums, cinemas, theatres, concert and exhibition halls, a swimming pool and sports centre, restaurants and cafés, shops and green spaces: all contribute to the quality of its environment.

Its entirely pedestrianised urban centre allows easy access to all academic buildings and provides an environment where students, researchers, professors and residents meet and form a unique social, cultural and economic fabric.

# AUBERGE DE JEUNESSE JACQUES BREL

Code	SVI-AJJB25
Name	Auberge de jeunesse Jacques Brel
Location	Brussels
Dates	Permanent project
Type	ENV - CULT - LEAD
Age	18+
Volunteers	2
Fees	50 euros



## Presentation of the partner

The association is affiliated to Hostelling International, the founding movement of the Youth Hostels.

As such, it offers accommodation to young people in particular (but not exclusively) who travel individually, with friends or in groups. It offers basic hotel services: catering (canteen with sustainable label), meeting rooms, a bar with local and craft beers. The association is also recognised by the Youth Service of the Wallonia-Brussels Federation as a meeting and accommodation centre and organises activities with young people aimed at developing their reflection on the world around them and taking an active part in it.

## Volunteer work

Being an alternative hostel, the work carried out will be mainly hotel work.

- Creation and implementation of activities with the public (exhibitions, debates, visits, karaoke, etc.)
- Helping with the association's sustainability initiatives (reducing food waste, permaculture, etc.)
- Helping with the smooth running of the service (occasional help with washing up and cleaning the rooms)
- Helping to welcome users and running the bar

## Food and Accommodation

Meals are provided for volunteers on the weekends only. Please bring money for food during the week 10-15€ per day.

## Meeting point

All information on how to get to the project will be given in the info sheet.

## Language

- French (good oral skills)
- English (fluent)
- Spanish (this is a plus!)



## Location



## About Brussel

Brussels is not only the Belgian capital but also the European capital. The city combines the characteristics of a large city with the charm of smaller, quieter towns. Modern with a classical touch, the streets of Brussels are full of charm and history. Brussels can be visited on foot, by bike, but also by horse-drawn carriage.

No, the people of Brussels do not eat chips every day. That said, they are still proud of their chip shops, and there can be a queue of people outside the best ones at all hours. A very cosmopolitan city, Brussels offers a range of different cuisines from around the world scattered throughout the city.

- **Nearest airport:** Zaventem Airport (Brussels Airport) – 14 km
- Brussels South Charleroi Airport – 60 km
- **Nearest train station:** Central Station - 200 m



## LE FAGOTIN

Code	BE-SVI-fagotin
Name	Le Fagotin
Location	Stoumont
Dates	Permanent project
Type	ENVI – EDU – ANI
Age	18+
Volunteers	2
Fees	first month: 290 euros next months: 240 euros/month



### Presentation of the partner

Since its creation in 1995, the Fagotin association has progressively developed its activities until it became a major educational and touristic actor in the Belgian Ardennes. Today, the association is a combination of a «Nature Center», an «Animation Farm» and a «Meeting and Accommodation Center». Their values are centered around four key notions: CITIZENSHIP, SUSTAINABILITY, SOLIDARITY, GOODWILL.

Both in summer and winter, the Fagotin team, made up of experienced animators, offers camps, field trips, workshops, walks, guided tours, training sessions, meetings, etc. in order to promote the wonders of Wallonia's natural heritage to everyone, especially to young people.

Usually (out of this covid period), the team is made up of 16 employees who welcome more than 10,000 people each year.

### Volunteer work

The tasks will vary depending on the needs of the farm. Volunteers can either help with the more physical work in the farm or with the social tasks. They will also take part in everyday tasks (cooking, washing the dishes, welcoming groups, etc.)

The work in the farm consists of many different tasks: maintenance of green areas (mowing, trimming, vegetable garden), maintenance of the pastures (fixing fences, cutting wood), maintenance of the animal shelters (construction and reparation), small interior and exterior improvements (painting, etc.).

The social tasks consist of helping the team with the organization of activities. Some activities are for children and teenager, others are more touristic activities (donkey rides, hiking with drinks, etc.).

### Accommodation

Volunteers can either sleep in a tent (with or without access to showers and toilets) or in a residential center. The participation fee per day / per person will vary according to the option chosen by the volunteer.

### Food

There are three meals offered per day. There are vegetarian options. It is also possible to pay for full board for the entire stay or to rent a kitchen (for groups).





### Meeting point

All information on how to get to the project will be given in the info sheet.

### Language

It is recommended to be able to speak a few words of French or to be willing to learn French.

### Location



### About Stoumont

Our partner association is in Stoumont, in the heart of the Belgian Ardennes. It is a quiet village, surrounded by forests. It is the perfect place to go for a walk in the forest. It has already worked with volunteers. Each year, about fifteen interns come and help on the farm. They make it available to the organization. It has bought another building in which work will be done. It will be converted into a residential center.

Stoumont is a very special place in the province of Liège. Difference in altitude within the municipality is around 400 metres and it has many water sources. This is the perfect place to really get to know. It is a very small town with very few activities.

- **Nearest airport:** Liege Airport – 42 km
- Maastricht Airport – 85 km
- Brussels South Charleroi Airport – 129 km
- Zaventem Airport (Brussels Airport) – 134 km
- **Nearest train station:** Stoumont Station – 6 Km



# RENAISSANCE

Code	SVI_REN_2022
Name	Renaissance
Location	Braine L'Alleud
Dates	Permanent project
Type	SOCI – DISA – EDU
Age	18+
Volunteers	2
Fees	50 euros



## Presentation of the partner

Renaissance ASBL is a residential center hosting 20 adults who were born with physical disabilities (cerebral palsy). The center aims at giving those people an adapted living place. Renaissance is a residential center in which each occupant has to take part in the daily tasks according to their abilities. These tasks are supervised by various specialized people: educators, occupational therapists, speech therapists, nurses, a caseworker and physiotherapists, a multidisciplinary team in which each person accompanies the resident individually within the group. The center highlights the importance of cultural exchange, openness, and encounters.

## Volunteer work

During the project, the volunteer will take part in the community life of the residential center under the supervision of staff members. They will share meals with the residents, among other things:

- Life at the center: cooking, food stocks control, laundry, cleaning activities etc.
- Leisure and creative activities: theater, well-being, painting, expression, comics.
- Activities organized out of the center: shopping, cultural excursions, sports, etc.
- Special events: Run & Bike (adapted bicycles), Christmas market.

The volunteers will not be in charge of medical care (washing the residents, putting them to bed, waking them up, etc.). A meeting will take place on a monthly basis to report on the volunteer's stay.

The volunteers are allowed to meet their tutor or the director of the center whenever they want. They will never have to stay alone with the residents and will be given safety instructions by a prevention adviser.

## Food and Accommodation

Three meals a day will be provided to the volunteers. They will eat with the residents on the ground floor of the center, with the team or on the first floor (where they will be housed). Every month, a general allowance and a food allowance are given to each volunteer working in the day center.

## Specific information

The volunteers must have the maturity needed to face the challenges of daily life with physically disabled people. Prior knowledge of French is essential because some residents only speak French and need clear indications. Besides, the center needs volunteers who are dynamic, motivated, eager to learn and to take initiatives, able to question themselves, and to accept criticism from the staff. They also need to be aware that they will live several months with different people who have a way of life which is sometimes totally opposed to our daily life.

## Meeting point

All information on how to get to the project will be given in the info sheet.

## Language

French is required or they have a knowledge of French so that they do not have to go through English.

## Location



- **Nearest airport:** Zaventem Airport (Brussels Airport) - 24 km
- Brussels South Charleroi Airport - 27 km
- **Nearest train station:** Braine-l'Alleud Station – 3 km

## About Braine-l'Alleud

As far as leisure is concerned, Braine-l'Alleud is home to a cinema complex, many sports halls, and a cultural center. Braine-l'Alleud is not far away from the historic site of Waterloo. Many hiking routes are available in the area.

Braine-l'Alleud is a Walloon municipality in the Belgian province of Walloon Brabant, about 20 kilometres south of Brussels. The Braine-l'Alleud municipality includes the former municipalities of Braine-l'Alleud proper, Ophain-Bois-Seigneur-Isaac, and Lillois-Witterzée. It also includes the hamlet of Sart-Moulin, the inverted name of which inspired Hergé's Moulinsart castle. The famous Lion of Waterloo where the eponymous battle took place is in the territory of Braine-l'Alleud. It is a very small town with very few activities.

## COMPAGNONS DE CHEVLIPONT ASBL

Code	SVI-Chevlipont
Name	Compagnons de Chevlipont ASBL
Location	Bruxelles-Forest
Dates	Permanent project
Type	EDU- SOC- MANU
Age	20+
Volunteers	2 (1M/1F)
Fees	350 euros



### Presentation of the partner

The association arises from the Resistance during the Second World War and cultivates the values of equality between men and women, of freedom thoughts, secularism and intergeneration. Through the social economy, we seek to open up a door to peace and to the world.

To promote peace education, our goal is to create and improve infrastructures for educational and cultural actors. In the centre of the city, our goal is to develop a friendly and eco-solidary space of 800M2.

First, we roll up our sleeves to create a humanist home.

Then, the users of the renovated places are NGO, non-profit organisations, youth organisations, women associations and local public.

### Volunteer work

In a very concrete way, the objectives bellow are in order of priority:

- Animation of participatory work camps with volunteers (also local volunteers).
- Arrangements targeting the reduction of the carbon footprints emitted by the building's activities taking place there, by limiting greenhouse emissions, developing thermal insulation, recycling rainwater etc.
- Improving stage equipment, host artistic and expression initiatives, which have deeply suffered during the health crisis.
- Supporting the amateur theatre company "Les artistes solidaires" and organizing a dinner show about the exiles and refugees: "The Victor Hugo saga in Brussels in 1862".

Due to the sanitary situation and the size of the building, renovation remains possible, but the number of people in action simultaneously on the site is limited.

## Accommodation

The participant does not have to pay any fees.

The project offers a room, in a host family house, food assistance in kind and pocket money (of 40€/month). Either they will participate in the preparation of the meal of the host family, or food will be provided and the volunteers will have access to a kitchen, or will be invited to a festive «meal» (1). Over the course of a week, these different scenarios can complement each other. For example, during the week they can take the lunch at the Constructorium (without any ready-made meals, there is a kitchen available on site), in the evening have dinner with the host family or have an invitation for a meal. A team meal is also scheduled periodically.

(1) Depending on the health situation, with few people or event with the number of people authorized. In compliance with health and legal standards, the work continues.

## Meeting point

The meeting point and the way to get there will be indicated in the info sheet.

## Camp language

In this project, you can speak either French or English. You will meet people from all over the world, so English will often be the language used. Don't forget: the group can represent a support even in the comprehension of linguistic. We don't ask for bilingual people.

## Location



- **Nearest airport:** Zaventem Airport (Brussels Airport) – 18 km
- Brussels South Charleroi Airport – 60 km
- **Nearest train station:** Brussels-Midi Station – 1,1 km
- **Transport between the railway station and the place of volunteering:** tram Berthelot – 11 min

## About Brussel and the area of the camp

Brussels is not only the Belgian capital but also the European capital. It combines the characteristics of a large city with the charm of smaller, quieter towns. Modern with a classical touch, the streets of Brussels are full of charm and history. Brussels can be visited by foot, by bike, but also by horse-drawn carriage. People of Brussels do not eat French fries every day. That said, they are still proud of their chip shops, and you may find a queue of people outside the best ones at any time of the day. As a very cosmopolitan city, Brussels offers a range of different cuisines from around the world scattered throughout the city.

The Constructorium is a pioneering project located in a green municipality in the South of Brussels called Forest. The Municipality of Forest, and the district are cosmopolitan (there are at least 262 different nationalities in Brussels). In a working-class district, the Constructorium is located on rue du Croissant, between a large park (the Forest Park) and a cultural centre around the Museum of Contemporary Art (the M.A.C.). Forest and the neighbouring municipality of Saint-Gilles have many Art-Nouveau houses and 1900 wonderful mansions.

The Constructorium is in the centre of citizens' networks fighting to improve their economic, social and environmental living conditions as well as the protection of their historical and natural heritage.

Before the health crisis, we used to meet at the local café, Ben Stassen (the Belgian Walt Disney, director of the Royal Corgy, Bigfoot junior, Robinson Crusoe cartoons among others) as well as the teacher, the pensioner of the Wielemans Brewery, the Audi electric car factory worker or job seeker.

In a huge cultural diversity, many inhabitants cultivate there friendliness, hospitality and surrealism.



# AUBERGE DE JEUNESSE DE BOUILLON

Code	SVI-BAUTO-EXT
Name	Auberge de jeunesse
Location	Bouillon (Province du Luxembourg)
Dates	Permanent project. From March to September
Type	EDU-SOCI-MANU
Age	18+
Volunteers	1
Fees	50 euros



## Presentation of the partner

The Belgian Youth Hostel are member of "Hostelling International network". It is a worldwide network of Not-for-Profit Youth Hostel Associations, their local members are all passionate advocates of sustainable travel and are dedicated to connecting young people and local communities in a peaceful and respectful way. In Belgium, the "Auberges de Jeunesse" (youth hostels) are recognized as non profit organizations and as youth organisations by the Wallonie Bruxelles Federation (the french speaking government of Belgium).

The Youth Hostel in Bouillon overlooks the city, offering a stunning view of the Semois and the fortress, one of Europe's most impressive castles. Magnificent view of the castle and the city, on a wooded site of 18,000m<sup>2</sup>. The Auberge welcomes people from all walks of life in a young and relaxed atmosphere.

## Volunteer work

- Reception of the public
- Animation, creation or organisation of activities to facilitate encounters
- Help with communication
- Helping in the kitchen and bar
- If possible, meeting with other volunteers in other youth hostels to create a common project
- Other tasks depending on profile: help with maintenance

The schedule will depend on the tasks:

- 8:00 - 12:00
- 9:00 - 16:00
- 16:00 - 21:00

## Accommodation

Private room with private bathroom

## Food

Some meals are offered, others are at the expense of the volunteer depending on the group meals



### Meeting point

Depending on the time and day of arrival (carpooling possible).

### Language

The volunteer should speak at least fluent English if no French. Spanish and Dutch are assets.

### Location



- **Nearest airport:** 2h by car
- **Nearest train station:** 15min by car, 1h by bus
- **Nearest bus line:** 10min walk

### About Bouillon

The locality is an important tourist centre.

Bouillon is a town in the south of Belgium, close to the French border. It is famous for the medieval castle of Bouillon overlooking the Semois. The Godefroid de Bouillon Archaeoscope is a multi-media attraction on the banks of the river, illustrating the life and times of Godefroid de Bouillon, a former resident of the castle and a crusader. Nearby is the Ducal Museum, which traces the history of the region through art, weapons and folk artefacts.

# AUBERGE DE JEUNESSE MALMEDY

Code	MalmedyAUTO-EXT
Name	Auberge de jeunesse Malmedy
Location	Malmedy (Province de Liège)
Dates	Semi/Permanent project. Duration of volunteering possible from 1 month to 8 months
Type	EDU-SOCI-MANU
Age	18+
Volunteers	1
Fees	50 euros



## Presentation of the partner

Our hostel is a member of "Hostelling International network". It is a worldwide network of Not-for-Profit Youth Hostel Associations, their local members are all passionate advocates of sustainable travel and are dedicated to connecting young people and local communities in a peaceful and respectful way. In Belgium, the "Auberges de Jeunesse" (youth hostels) are recognized as non profit organizations and as youth organisations by the Wallonie Bruxelles Federation (the french speaking government of Belgium).

Our hostel is a green hostel and is located 2km from the small town of Malmedy. We are close to the Hautes Fagnes with its beautiful landscape. What makes us special is our activities! We have an aerial course, a climbing wall, scooters and other activities in our infrastructure. Our hostel is a sports hostel, so you have to like nature, sports, peace and quiet, hiking, and be able to be alone at times and keep yourself busy. Our team is also festive! The hosts and receptionists will be happy to inform you about the festivities in the region.

## Volunteer work

- Reception of the public
- Animation, creation or organisation of activities to facilitate encounters
- Help with communication
- Helping in the kitchen and bar
- If possible, meeting with other volunteers in other youth hostels to create a common project
- Other tasks: help with cleaning common areas, rooms, gardening (mowing, leaves etc.) ....

## Schedule

- The volunteer performs 24 .hrs per week
- The volunteer does max 4 à 5.h per day

The schedule would be : either in the morning 07:00 to 12:00 or a little later depending on the tasks. Or reception help at 4pm or during the day if there is activity. Flexibility in the hours, but with a schedule



known in advance so that he can plan things on his own.

### Accommodation

Private room, but during the stay the person may have to change room, depending on the planning, but it will always be in a private room.

### Food

Meals are provided and offered, if no meals are available, the volunteer is given a lump sum for his meal.

### Meeting point

We ask that the volunteer arrives at Verviers or Trois-Ponts station, and we arrange to pick him up.

### Camp language

French (or good knowledge)

### Location



- **Nearest airport:** 100 km
- **Nearest train station:** 15 km
- **Nearest bus line:** 2 km

### About Malmedy

Malmedy, a town at the foot of the Hautes Fagnes nature reserve, situated at the confluence of two rivers (Warche and Warchenne) never sleeps! It's a destination in the heart of the Belgian Ardennes that will surprise you. Malmedy, the capital of outdoor activities, with its exceptional sites, will delight all nature lovers. Thanks to the many signposted walks, the region is a real paradise for those who want to visit it on foot or by bike. Malmedy is an unforgettable place for relaxation, culture, folklore and adventure. It's the ideal place to discover the Ardennes.





# AUBERGE DE JEUNESSE CHAMPLON

Code	SVI-BAUTO-EXT
Name	Auberge de jeunesse Champlon
Location	Champlon (Province de Luxembourg)
Dates	Semi/Permanent project
Type	EDU-SOCI-MANU
Age	18+
Volunteers	1
Fees	50 euros



## Presentation of the partner

The Belgian Youth Hostels are members of "Hostelling International network". It is a worldwide network of Not-for-Profit Youth Hostel Associations, their local members are all passionate advocates of sustainable travel and are dedicated to connecting young people and local communities in a peaceful and respectful way. In Belgium, the "Auberges de Jeunesse" (youth hostels) are recognized as non profit organizations and as youth organisations by the Wallonie Bruxelles Federation (the french speaking government of Belgium).

The Champion Youth Hostel is set in the very heart of the Ardenne in a quiet environment in the middle of nature. The region, characterised by its many forests, is a real invite to relax and rediscover nature. There is a young and dynamic team. This charming hostel, Green key certified, offers many services and commodities

## Volunteer work

- Animation, creation or organisation of activities to facilitate encounters
- Help with communication
- Helping in the kitchen and bar
- If possible, meeting with other volunteers in other youth hostels to create a common project
- Other tasks: help with cleaning common areas, rooms,....

## Schedule

- The volunteer performs 19 hrs per week
- The volunteer does 3.h per day

The schedule would be: fully flexible schedule, evening or morning

## Accommodation

Common room

## Food

At the expense of the volunteer.



### Meeting point

The volunteer comes on his/her own.

### Camp language

French and /or english and/or German.

### Location



### About Champlon

If there is a village with a typical Ardennes character, it is Champlon. Located at the entrance to the great Freyr forest, it offers preserved and even wild nature where it is good to walk. This important village owes its notoriety above all to its famous barrier culminating at 475 metres on the road linking Brussels to Luxembourg. Today it has disappeared (fortunately, no one pays a toll anymore!), but it gave the name to the place: Barrière de Champlon. The village is impressively long. Its church, Saint-Remacle, dates from 1884. There are some nice views over the landscape.

- **Nearest airport:** 100 km
- **Nearest train station:** 20 km
- **Nearest bus line:** 200 m

# ASBL MOZAÏQUE SOCIAL TOURISM ACCOMMODATION

Code	SVI-LLNAUTO-EXT
Name	asbl Mozaïque Social tourism accommodation
Location	Louvain-La-Neuve (Province Brabant Wallon)
Dates	Permanent project (1 month or more)
Type	LEAD-SOCI-KIDS-CULT
Age	18+
Volunteers	1
Fees	50 euros



## Presentation of the partner

Neither a hotel nor a traditional gîte, the Mozaïk gîte is much more than that! We are above all

a friendly social tourism accommodation open to all.

Our infrastructures, simple but comfortable, are accessible for any type of stay, whether it is for a family or friends holiday, for a family holiday or for a family vacation.

family or friends, for professional, school or association trips or associative trips.

Mozaïk is also a place of life and exchange anchored in the local community which proposes citizen animations open to all as well as youth stays. The layout of our gîte, with our meeting rooms, calls for meetings and conviviality.

## Volunteer work

- Organise socio-cultural activities and entertainment for the inhabitants of the town, students of the town, members of other youth organisations and people staying at the hostel. Examples:
- Organising/hosting video-debate evenings
- Organising/hosting food evenings
- Organising/hosting board game evenings
- Organising/animating conversation tables
- Organise/host eco-citizen workshops
- Organise/animate visits of Louvain-la-Neuve in your mother tongue
- Organise a dress sale
- Create a collective vegetable garden
- Participate in the creation, organisation and animation of holiday courses for 5-16 year olds (example: nature course with the WWF).
- Search for partners for the activities of the gîte (e.g. non-profit organisations, youth organisations, etc.).
- Decorate the gîte according to the seasons and events. Examples: Halloween
- Halloween
- Louvain Beach
- Apéro des voisins
- Create a wall of expression in the reception area
- Animate the association's social networks (photos, videos...).
- Helping to set up a zero waste dynamic within the association.
- Punctually and according to the affinities of the volunteer :
- Helping to prepare meals in the kitchen
- Help with cleaning (rooms, common areas)
- Helping with reception (welcoming guests)
- Translate documents
- Taking care of plants (watering...)

## Schedule

the schedule will depend on the tasks. Hours of work

are to be discussed before the project with the partner

### Accommodation

Accommodation is not provided. Costs to be covered by the volunteer: see average price of a KOT (student room) or a host family in Louvain-la-Neuve. We think that for the development of the volunteer it would be ideal if he/she stayed in a KOT or a host family and not in a gîte.

### Food

**Food:** morning/midday/evening.

**Pocket money:** according to the needs of the volunteer. Equal to expenses to be able to live in Louvain-la-Neuve

### Meeting point

Depending on the time and day of arrival (carpooling possible).

### Camp language

French and English

### Location



- **Nearest airport:** 30 mn by car
- **Nearest train station:** 5 min by car, 1mn walk
- **Nearest bus line:** 5 min walk

### About Louvain La Neuve

Louvain La Neuve is a student city with many universities.

A city where life is good, whatever the age of the inhabitants.

Several museums are present: the L Museum (the city's university museum), the Hergé Museum (next to the gîte), the Outdoor Water and Fountain Museum. The Halles Universitaires forum: an exhibition space dedicated to photography, literature, the arts, science, etc.

A network of libraries also exists in the various faculties and in Ottignies, as well as a

a media library «Point Culture» and a games library.

Theatre is also well represented by the Aula Magna theatre, the Atelier Théâtre Jean Vilar and the Centre Culturel d'Ottignies. The Ferme du Biéreau is also a performance hall, but with a mainly musical purpose.

The city is full of socio-cultural and leisure activities such as the «Cinescope» cinema, the «Royal Bowl» bowling alley, the «Vex» virtual reality room, the «Snooker Academy» or «Lucky Club Bar» billiard rooms, the «Diving School» diving courses, the free Disco-Golf course, the numerous conferences and debates in the city, etc.

Finally, cultural events take place every year, such as the Jyva'Zik festival of performing arts, the Welcome Spring Festival of music every year in the spring, Ebullition, a festival of wooden games in June, the Summer Festival with Louvain-la-Plage from the end of July to the beginning of August, the 24-hour bicycle race, which usually takes place on the third Wednesday in October, etc.

In the municipality, there is also the «African Night» in June (Bois des Rêves), the «Halloween Party» on 30 October (Bois des Rêves), the «Walloon Festivals» organised on the third weekend of September (Ottignies), the «Apple Festival» at the end of October (Céroux)



# KALEO

Code	SVI_KALEO_2023
Name	KALEO
Location	Ardennes
Dates	Permanent project
Type	EDU-SOCI-CULT
Age	18+
Volunteers	2
Fees	50 euros



## Presentation of the partner

Kaleo is a non-profit organisation that provides accommodation for all kind of people: young people, families, school groups, sports clubs and retirees. They have B&B in Eupen, Han-sur-Lesse, Louvain-la-Neuve, Ovifat, Villers-Sainte-Gertrude and Wanne and provide full board to their guests.

Throughout the year, the B&B's offer a series of activities for the guests to enjoy. Kaleo also organises thematic school trips for kindergarten, primary and secondary school students. They also hold workshop during school vacation for young people from 5 to 16.

Kaleo provides a social and dynamic atmosphere by organising events such as "apéros des voisins" ("neighbour's drinks"), craft markets, storytelling walks or even Halloween and New Year's Eve parties.

## Volunteer work

Volunteers will have the opportunity to stay in several B&B's during their project. At each B&B, they will be able to appreciate the atmosphere and participate in the daily life. Here is examples of tasks volunteers will be asked to do:

- Welcoming groups
- Creating and organising activities for training courses
- Creating and organising activities for school groups
- Helping the organisation in the preparation of events in B&B's
- Creating and setting up activities with the guests
- Helping with the smooth running of the B&B (serving meals, helping with cleaning, etc.)

## Accommodation

Volunteers will be staying in different B&B's, depending on availability, events and activities. In each B&B's, they will have a room (usually a private room with a shared bathroom).

## Food

Volunteers will be provided with food (3 meals a day). However, at certain times, when there are no guests at the B&B, the kitchens will be closed, and meals will not be available. Volunteers will have to buy their food elsewhere.

## Meeting point

To arrange with the local organisation (SVI).

## Camp language

French and English



## Location



- **Nearest airport:** Charleroi Airport – 4 km
- **Nearest train station:** Charleroi Airport – 4 km

## About Wallonia

Kaleo offers to host volunteers in 6 B&B's spread throughout Wallonia: Eupen, Han-Sur-Lesse, Louvain-la-Neuve, Ovifat, Villers-Sainte-Gertrude et Wanne.

They are the perfect places to rest and discover the Belgian culture.

From the Hautes-Fagnes to the banks of the Lesse passing by the pedestrian university town, you will have the opportunity to discover Wallonia and its diversity.

To receive our friday list, send us an email to  
[incoming@servicevolontaire.org](mailto:incoming@servicevolontaire.org)

## SERVICE VOLONTAIRE INTERNATIONAL BELGIUM

---

Postal address (headquarter) 21 rue Boucle des métiers, 1348 Louvain-La-Neuve

---

Website [www.servicevolontaire.org](http://www.servicevolontaire.org)

---

Office hours Monday – Friday 9 AM to 18 PM (GMT + 2:00)

---

Phone

**Belgium:**  
+32 2 888 67 13, +32 2 840 72 00,  
+32 69 60 90 65, +32 (0)10 87 05 4

**France:**  
+33 (0) 3 66 72. 90. 20, + 33 (0)9 75 18 40 39

**Switzerland:**  
+41 (0) 325 11 07 31

**Canada:**  
+1 (0) 514 400 25 78

**USA:**  
+1 (0) 872 216 69 91

**United Kingdom:**  
+445601569069

**Russia:**  
+7 (0) 4993488140

**Vietnam:**  
+84 4 62845535, +84 4 22154993

---

Whatsapp +32 2 888 67 13

---

Facebook [www.facebook.com/servicevolontaireinternational](https://www.facebook.com/servicevolontaireinternational)

---

Emergency contact numbers +32 495 680 934 – De Hanscutter Pierre, director

---

Desk

---

**De Hanscutter Pierre,** [pierre@servicevolontaire.org](mailto:pierre@servicevolontaire.org)  
founder & director

---

**Patricia Brabant** [pedagogie@servicevolontaire.org](mailto:pedagogie@servicevolontaire.org)  
pedagogic coordinator

---



Scan this QR code to download the application form for registering in the project.  
Or use this link: [Comment postuler pour partir en volontariat international ?](#)

Send your application form to [incoming@servicevolontaire.org](mailto:incoming@servicevolontaire.org)